

HOTEL DIRECTORY
ENGLISH



**AS EXCEPTIONAL
AND INDIVIDUAL
AS YOU ARE.**

SORELL
HOTELS SWITZERLAND





FEEL COMPLETELY AT
EASE IN YOUR
TEMPORARY HOME.

Welcome	4
The Sorell Hotels	6
The Sorell Tradition	8
The Sorell Breakfast	10
Sorell Hotel Rex, Zurich	13
Sorell Hotel Zürichberg, Zurich	M+E 14
Sorell Hotel Seidenhof, Zurich	18
Sorell Hotel Seefeld, Zurich	20
Sorell Hotel Rütli, Zurich	22
Sorell Hotel Rigiblick, Zurich	24
Sorell Hotel Arte, Zurich-Spreitenbach	M+E 26
Sorell Hotel Sonnentel, Zurich-Dübendorf	M+E 28
Sorell Hotel Krone, Winterthur	M+E 30
Sorell Hotel Arabelle, Bern	33
Sorell Hotel Ador, Bern	M+E 34
Sorell Hotel Merian, Basel	M+E 36
Sorell Hotel Aarauerhof, Aarau	M+E 38
Sorell Hotel Speer, Rapperswil	41
Sorell Hotel Rüden, Schaffhausen	M+E 42
Sorell Hotel City Weissenstein, St. Gallen	44
Sorell Hotel Tamina, Bad Ragaz	M+E 46
Sorell Hotel Asora, Arosa	50
Sorell Hotel St. Peter (coming soon), Zurich	52
Sorell Meetings & Events	54

18 TIMES UNIQUE AND INDIVIDUAL.

Sorell Hotels is the largest hotel group in Swiss ownership.

The extremely successful group has expanded strongly in recent years. In 18 hotels at 10 destinations in Switzerland, about 500 employees are currently taking care of our guests' well-being. Whether a cosy old town jewel or a prestigious congress centre, a relaxed holiday home in the mountains or a lifestyle oasis with gourmet ambitions at the lake, each hotel is different and is happy to show its individuality.

The service in all Sorell Hotels is personal, friendly and attentive. It doesn't measure itself against the industry average, but to the higher internal standards defined especially for the group in its quality program. And what does this mean for the guest?

Be it a business meeting or a weekend city trip: within the ambience of the Sorell Hotels you will be looked after, served with courtesy and simply feel like you're in good hands.





THE BEST PRICES AND GREAT OFFERS

Details on the locations are available at: www.sorellhotels.com



*Sorell Hotels is the largest
Swiss hotel group.
We guarantee the highest
quality standards and
a very individual service.*



BEST RATES GUARANTEED, PLUS EXCLUSIVE ADDITIONAL BENEFITS IF YOU BOOK THROUGH OUR WEBSITE.

7

1	Sorell Hotel Rex	<p>Weinbergstrasse 92, 8006 Zurich T +41 44 360 25 25, F +41 44 360 25 52 rex@sorellhotels.com</p>	<p>AMADEUS YX ZRH177 SABRE YX 19090 WORLDSPAN YX 94177 APOLLO/GALILEO YX 64539</p>	10	Sorell Hotel Arabelle	<p>Mittelstrasse 6, 3012 Bern T +41 31 301 03 05, F +41 31 302 42 62 arabelle@sorellhotels.com</p>	<p>AMADEUS YX BRN606 SABRE YX 57951 WORLDSPAN YX 0606 APOLLO/GALILEO YX 35607</p>
2	Sorell Hotel Zürichberg M+E	<p>Orellistrasse 21, 8044 Zurich T +41 44 268 35 35, F +41 44 268 35 45 zuerichberg@sorellhotels.com</p>	<p>AMADEUS YX ZRHZUR SABRE YX 28267 WORLDSPAN YX ZRHZR APOLLO/GALILEO YX 51279</p>	11	Sorell Hotel Ador M+E	<p>Laupenstrasse 15, 3001 Bern T +41 31 388 01 11, F +41 31 388 01 10 ador@sorellhotels.com</p>	<p>AMADEUS YX BRNALF SABRE YX 31618 WORLDSPAN YX 43309 APOLLO/GALILEO YX 78930</p>
3	Sorell Hotel Seidenhof	<p>Sihlstrasse 9, 8001 Zurich T +41 44 228 75 00, F +41 44 228 75 75 seidenhof@sorellhotels.com</p>	<p>AMADEUS YX ZRHSEI SABRE YX 19553 WORLDSPAN YX ZRHHSI APOLLO/GALILEO YX 33636</p>	12	Sorell Hotel Aarauerhof M+E	<p>Bahnhofplatz 2, 5000 Aarau T +41 62 837 83 00, F +41 62 837 84 00 aarauerhof@sorellhotels.com</p>	<p>AMADEUS YX ZDA001 SABRE YX 11569 WORLDSPAN YX 94001 APOLLO/GALILEO YX 13957</p>
4	Sorell Hotel Seefeld	<p>Seefeldstrasse 63, 8008 Zurich T +41 44 387 41 41, F +41 44 387 41 51 seefeld@sorellhotels.com</p>	<p>AMADEUS YX ZRHSEZ SABRE YX 56459 WORLDSPAN YX ZRHHS APOLLO/GALILEO YX 33076</p>	13	Sorell Hotel Speer	<p>Untere Bahnhofstrasse 5, 8640 Rapperswil T +41 55 220 89 00, F +41 55 220 89 89 speer@sorellhotels.com</p>	<p>AMADEUS YX ZRH220 SABRE YX 40620 WORLDSPAN YX 94220 APOLLO/GALILEO YX 52236</p>
5	Sorell Hotel Rütli	<p>Zähringerstrasse 43, 8001 Zurich T +41 44 254 58 00, F +41 44 254 58 01 ruetli@sorellhotels.com</p>	<p>AMADEUS YX ZHRHUE SABRE YX 19554 WORLDSPAN YX ZHRHRU APOLLO/GALILEO YX 39012</p>	14	Sorell Hotel Rüden M+E	<p>Oberstadt 20, 8200 Schaffhausen T +41 52 632 36 36, F +41 52 632 36 37 rueden@sorellhotels.com</p>	<p>AMADEUS YX ZKJZZR SABRE YX 54457 WORLDSPAN YX ZKJZZ APOLLO/GALILEO YX 29335</p>
6	Sorell Hotel Rigiblick	<p>Germaniastrasse 99, 8044 Zurich T +41 43 255 15 70, F +41 43 255 15 80 rigiblick@sorellhotels.com</p>	<p>AMADEUS YX ZRH960 SABRE YX 16708 WORLDSPAN YX 44960 APOLLO/GALILEO YX 99375</p>	15	Sorell Hotel City Weissenstein	<p>Davidstrasse 22, 9000 St. Gallen T +41 71 228 06 28, F +41 71 228 06 30 cityweissenstein@sorellhotels.com</p>	<p>AMADEUS YX QGL452 SABRE YX 52720 WORLDSPAN YX 46452 APOLLO/GALILEO YX 61699</p>
7	Sorell Hotel Arte M+E	<p>Wigartestrasse 10, 8957 Spreitenbach T +41 56 418 42 42, F +41 56 418 43 43 arte@sorellhotels.com</p>	<p>AMADEUS YX ZRH190 SABRE YX 18688 WORLDSPAN YX 94190 APOLLO/GALILEO YX 77562</p>	16	Sorell Hotel Tamina M+E	<p>Am Platz 3, 7310 Bad Ragaz T +41 81 303 71 71, F +41 81 303 71 72 tamina@sorellhotels.com</p>	<p>AMADEUS YX ZRHTAM SABRE YX 37334 WORLDSPAN YX ZRHTM APOLLO/GALILEO YX 10976</p>
8	Sorell Hotel Sonnentäl M+E	<p>Zürichstrasse 94 / 96, 8600 Dübendorf T +41 44 802 12 82, F +41 44 821 41 91 sonnentael@sorellhotels.com</p>	<p>AMADEUS YX ZRHHSO SABRE YX 59460 WORLDSPAN YX HSONN APOLLO/GALILEO YX 62059</p>	17	Sorell Hotel Asora	<p>Poststrasse, 7050 Arosa T +41 81 377 12 08, F +41 81 377 46 90 asora@sorellhotels.com</p>	<p>AMADEUS YX ZDE901 SABRE YX 54783 WORLDSPAN YX 6901 APOLLO/GALILEO YX 23268</p>
9	Sorell Hotel Krone M+E	<p>Marktgasse 49, 8400 Winterthur T +41 52 208 18 18, F +41 52 208 18 20 krone@sorellhotels.com</p>	<p>AMADEUS YX ZRH484 SABRE YX 20096 WORLDSPAN YX 44484 APOLLO/GALILEO YX 10742</p>	18	Sorell Hotel Merian M+E	<p>Rheingasse 2, 4058 Basel T +41 61 685 11 11, F +41 61 685 11 12 merian@sorellhotels.com</p>	<p>AMADEUS YX BSL146 SABRE YX 005370 WORLDSPAN YX 94146 APOLLO/GALILEO YX 06010</p>

CLEAR VISIONS AND BRAVE IDEAS, A SUCCESS STORY SINCE 1894.

8



On 27 September 1894, visionary middle-class women founded the «Zurich Society for Temperance and Public Health», the ZFV. The driving force and first CEO of the ZFV was Susanna Orelli. Her vision for the future still guides the ZFV's activities. The company has long been one of Switzerland's leading hospitality, gastronomy and bakery groups.

1897	Only three years after the foundation in 1894, the industrious businesswomen decide to enter the hotel sector and take over the Hotel Rütli at the entrance to Zurich's Niederdorf (Lower Town).
1900	The ZFV opens the newly built Hotel Zürichberg as an alcohol-free public house and spa on 1 September 1900. The people of Zurich are invited to rest and recover here on their weekends and holidays. With the Hotel Zürichberg, the pioneering women also created Zurich's first self-service restaurant. One night's stay in the hotel costs CHF 1.50, or CHF 3.00 with full board.
1914	Growth in the Zurich hills – the ZFV purchases the beautifully situated Rigiblick spa house.
1943	Keeping a finger on the pulse of the Bahnhofstrasse: acquisition of the Hotel Seidenhof in the centre of Zurich.
1999	After a pause of more than 50 years, the ZFV buys another hotel: the Hotel Seefeld in Zurich's district of the same name. With this begins a successful expansion phase.
2002	Launch of the brand «Sorell Hotels». The group, which had until this time been known as ZFV Hotels, is renamed as Sorell Hotels. The name honours the founder of the ZFV and business pioneer Susanna Orelli. The purchase of the Hotel Rüden in Schaffhausen in the same year is the first expansion outside the City of Zurich.
2003	Purchase of the Hotel Ador in Bern.
2004	The Orelli house in Arosa is purchased and renamed as Hotel Asora. It becomes the group's first holiday hotel.
2005	The Hotel Argovia becomes the group's first hotel in Aargau. The second house in Bern – the Hotel Arabelle – is added in the same year.
2007	Sorell Hotels take over the Hotel Tamina in Bad Ragaz, a second holiday hotel.
2008	The Hotel Krone in the centre of Winterthur is acquired.
2011	The successful expansion course continues with acquisition of the Hotel City Weissenstein in St Gallen.
2012/13	Purchase of the hotels Aarauerhof in Aarau, the Rex in Zurich, the Sonnenthal in Dübendorf and the Arte in Spreitenbach.
2015	The hotel group prepares itself for the future in a more contested market with a brand relaunch and various implementation programmes. Just as visionary and full of ideas now as over 100 years ago when it all began.
2017	Hotel Speer in Rapperswil town centre is acquired by Sorell Hotels.
2018	The Hotel Merian in Basel, steeped in tradition, is now part of the Sorell Hotels group.
2020	Opening of the Sorell Hotel St. Peter, the ninth Sorell Hotel in Zurich.

so
good



WITH A LOVE FOR DETAIL AND DEVOTION TO ENJOYMENT: THE SORELL BREAKFAST.

«Breakfasting like royalty» in the Sorell Hotels doesn't refer to the size of the buffet; real royalty doesn't value quantity, but rather style and quality. This is where Sorell Hotels set the standard: many of our products are made in our own bakeries and kitchens. We exclusively offer dairy products, meat, eggs and teas from producers who meet our high quality standards.

11



SPELTZ *Maggia* BREAD

The bakers insist on the traditional «long proving» method for this bread. This gives the dough several hours to mature and develop. The result is astounding: the bread with the crispy crust is definitely a slice tastier.

JAMS made in-house

When the pots are bubbling in the Sorell Hotel Rigiblick and the smell of fruit wafts from the kitchen, it must be jam time! Home-made jams are produced in a grand style following the delicious recipes of Vreni Giger. These will be enjoyed by guests in no fewer than 18 hotels. Apricot, strawberry, blackberry and lots of other delicious fruit varieties depending on the season.



EGGcellent

It should be obvious. Unfortunately, it doesn't seem to be. It certainly is to us. Whether boiled, scrambled or in an omelette, Sorell Hotels put exclusively Swiss eggs from free-range chickens on the table.

Grab 'n' Go coffee IN ALL 18 SORELL HOTELS

There are times when you just have to skip breakfast. Luckily there's always a plan B in the Sorell Hotels. Armed with a Grab 'n' Go coffee, a fresh croissant, a piece of fruit or a cereal bar, stressful morning scenarios lose their scariness. Best of all: you still get a tasty start to the day.



SO
Zurich

Sorell Hotel Rex
Zurich

The Sorell Hotel Rex lies in the heart of Zurich, in the best location, next to the ETH and the university. The favourite hotel of celebrated Swiss author Friedrich Dürrenmatt has also won over many other guests. No wonder: the Zurich old town and the main station are only minutes away by foot. Only 15 minutes drive from Zurich International Airport. The Sorell Hotel Rex offers comfortable rooms, modern bathrooms and all other amenities which it needs to make a stay in the city perfect. The varied breakfast in the Sorell Hotel Rex is always a delight, in summer even more so as you can take your breakfast on the cosy garden terrace. And if you suddenly feel peckish at an odd time, you can take care of it in the lounge: the place for tasty snacks, small and large.

Location: Only a few minutes' walk from the main station and the Zurich old town, close to the University of Zurich and the ETH, 15 minutes' drive from Zurich International Airport. Hotel parking places available.

Facilities: 41 stylishly furnished rooms, some with air conditioning, bath/shower, TV/radio, free WiFi, safe, minibar, coffee machine or kettle, non-smoking rooms.

Gastronomy: Various snacks. In summer on the cosy garden terrace.

Recovery: Ideal base for a visit to the sites of the City of Zurich.

SMALL, INTIMATELY MANAGED HOUSE, A REAL GEM IN THE MIDDLE OF ZURICH.



✚ Weinbergstrasse 92
8006 Zurich
☎ T +41 44 360 25 25
F +41 44 360 25 52
🌐 rex@sorellhotels.com
sorellhotels.com/en/rex

✚ Other Sorell Hotels nearby:

Sorell Hotel Rütli
1 km south / p. 22-23

Sorell Hotel Seidenhof
1.3 km south / p. 18-19

Current room prices are available at sorellhotels.com

Sorell Hotel Zürichberg

Zurich

M+E

THE DESIGN JEWEL ABOVE THE CITY, SURROUNDED BY NATURE.

Sophisticated design, idyll and close to nature – and only a few minutes away from the vibrant city centre. Welcome to the Sorell Hotel Zürichberg, the architectural jewel above the rooftops of Zurich. The view of the city, the lake and the Alps is unique. The house designed by the architects Burkhalter and Sumi in art nouveau style and the modern annex building present themselves as an accomplished mixture of light, architecture and art. Combined with the view, they are objects of comfort, almost works of art in themselves. The crew of the restaurant promises extraordinary taste sensations: the open kitchen is the main attraction and symbolises the value we place on honest cooking. Enjoy a classic club sandwich, snack creations, fancy cocktails and refreshing long drinks in the bar. The Sorell Hotel Zürichberg is also the ideal location for events. Prestigious banqueting rooms – some in art nouveau style – are perfectly suited for weddings or celebrations, graduations or business meetings. In summer, our spacious garden terrace beckons with its view and atmosphere. During the winter season Chalet Zürberg offers a large fondue range above the rooftops of Zurich.



Orellistrasse 21
8044 Zurich



T +41 44 268 35 35
F +41 44 268 35 45



zuerichberg@sorellhotels.com
sorellhotels.com/en/zuerichberg
chalet-zueriberg.ch/en







*Exclusive services for bookings
made through sorellhotels.com*



Other Sorell Hotels nearby:

Sorell Hotel Rigiblick

1.2 km north-east / p. 24-25

Sorell Hotel Seefeld

2.6 km south-west / S. 20-21

Location: Elevated position, wonderful view, quiet and restful atmosphere in the middle of nature. 3km from Zurich main station and the Bahnhofstrasse shops, 20 minutes drive to Zurich International Airport, underground hotel car park free for hotel guests.

Facilities: 66 stylishly furnished design rooms with bath or shower, TV/radio, DVD and CD player, free WiFi, safe, minibar, Nespresso coffee machine, non-smoking and smoking rooms.

Gastronomy: Restaurant, terrace with magnificent view, bar with lounge, Chalet Züriberg with a wide selection of fondue during winter time.

Seminar/Banquet: 5 lounges/rooms (largest room for up to 100 people), two rooms in art nouveau style with stucco work and elegant wood. Suitable for formal business events, but also for celebrations (wedding receptions, baptisms, birthdays, etc.). Events and aperitifs can also be organised on the terrace.

Recovery: Free mountain bike rental, sun deck, cross-country and jogging trails in the forest. Only a few minutes' walk to Zurich Zoo.



****S

Sorell Hotel Seidenhof

Zurich

18

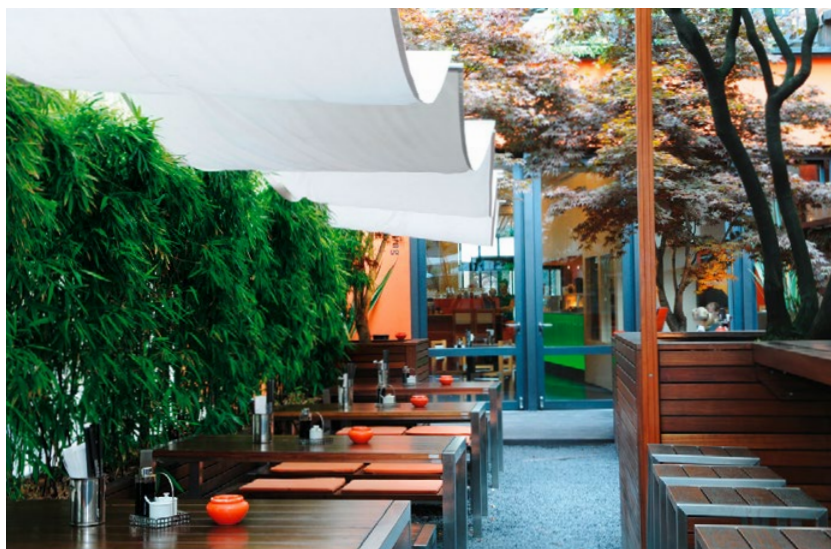


*Book your room through
sorellhotels.com and
enjoy the extra services*

📍 Sihlstrasse 9
8001 Zurich

📞 T +41 44 228 75 00
F +41 44 228 75 75

✉️ seidenhof@sorellhotels.com
sorellhotels.com/en/seidenhof



The Sorell Hotel Seidenhof is right on Zurich's Bahnhofstrasse. A top hotel at the best address and thus high on the wish-list of discerning business and leisure guests. The lake promenade, numerous restaurants, the world-famous Zurich shopping strip, trend spots, bars and cinemas: all easily reached from the hotel on foot. The Sorell Hotel Seidenhof doesn't only score with its geographically central location, but also with its culinary aspirations: the first-class breakfast surprises with local products and the Asian restaurant Mishio is no longer only for those in the know. Enjoy dishes suffused with Thai, Vietnamese and Chinese influences. Authentically prepared and served in a modern atmosphere. In summer you can also eat in the Mishio garden oasis in the inner courtyard – a small taste of the Far East in the middle of Zurich. And so that you feel completely relaxed during your stay, the Sorell Hotel Seidenhof offers various massage and wellness treatments in-house.

Location: Right next to the Bahnhofstrasse, 3 minutes' walk from the main station, 10 minutes by train to Zurich International Airport. Public car park next door.

Facilities: 84 tastefully furnished rooms with air conditioning, bath/shower, TV/radio, free WiFi, safe, minibar, Nespresso coffee machine and kettle, non-smoking and smoking rooms.

Gastronomy: Restaurant Mishio with garden oasis: fresh, aromatic, healthy Asian cuisine.

Recovery: Collaboration with Holmes Place fitness centre (opposite the hotel). The many sites of the City of Zurich and the lake promenade are easily reached on foot.

REAL ZURICH CITY ATMOSPHERE AT THE BEST ADDRESS.



Other Sorell Hotels nearby:

Sorell Hotel Rütli
0.6 km east / p. 22-23

Sorell Hotel Seefeld
1.3 km west / p. 20-21

****S
Sorell Hotel Seefeld
 Zurich

20

ROOMS WITH STYLE, A BAR WITH AMBIENCE AND A DISTRICT WITH CHARM.



Seefeldstrasse 63
 8008 Zurich

T +41 44 387 41 41
 F +41 44 387 41 51

seefeld@sorellhotels.com
 sorellhotels.com/en/seefeld

Stay in the trendiest district in the middle of Zurich. In an atmosphere which knows how to please straight away. Harmonic colours, modern forms, selected furniture, simple parquet floors and bright bathrooms. The colour schemes and light effects created with the artist Garda Alexander ensure a perfect sense of comfort in the hotel. In the hotel's vicinity are also the Opera House, Kunsthaus art gallery and lake promenade. The Bahnhofstrasse and the old town are easily reached on foot. Classic cold dishes, snacks and pasta variations are served in the bar at lunch. In the evenings, the bar is an ideal meeting place to join friends, colleagues or business partners for an aperitif.

Location: In the dynamic Seefeld district, close to the lake promenade and Opera House, good connections to the main station and Zurich International Airport. Hotel parking spaces available.

Facilities: 64 modern rooms with air conditioning, bath/shower, TV/radio, free WiFi, safe, minibar, non-smoking rooms.

Gastronomy: Bar in Seefeld: middays – cold classic dishes, snacks and pasta. In the evenings – the ideal meeting place to enjoy an aperitif or nightcap in a relaxed atmosphere.

Seminar: One meeting room for up to 10 people.

Recovery: Small fitness room with endurance and strength equipment, lake promenade, Opera House, Kunsthaus gallery, old town and shopping strip only minutes away by foot or tram.

*Book online on sorellhotels.com and
 benefit from exclusive services*

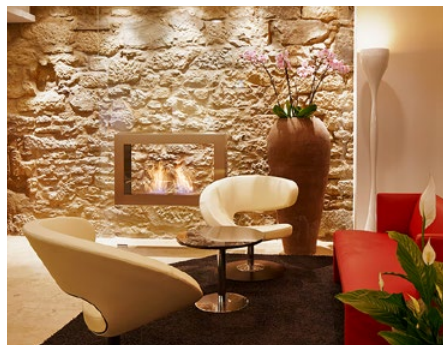


Other Sorell Hotels nearby:

Sorell Hotel Seidenhof
1.5 km north-west / p. 18-19

Sorell Hotel Rütli
1.7 km north / p. 22-23

IN THE HEART OF ZURICH, AT THE ENTRANCE TO THE CHARMING OLD TOWN.



 Zähringerstrasse 43
8001 Zurich
 T +41 44 254 58 00
F +41 44 254 58 01
 ruetli@sorellhotels.com
sorellhotels.com/en/ruetli

*The best prices and great offers
at sorellhotels.com*

*** Sorell Hotel Rütli Zurich

In the middle of Zurich, at the entrance to the historic old town, business and leisure guests alike are spoiled and surprised by a committed hotel team: they make the very intimate Sorell Hotel Rütli into a relaxed centre of calm in a vibrant city. Especially relaxing is a stay in one of the newly designed superior rooms. The lifestyle rooms feature designer lamps and the beautiful lounge chairs make your visit a genuine pleasure. One room even features a whirlpool. The Sorell Hotel Rütli is close to the main station. You can't be any more central. In walking distance are several boutiques, restaurants and bars, galleries, museums, cinemas and theatres. The meeting point and hub of the Sorell Hotel Rütli is the Lounge. Leaf through the newspaper as you sip a latte macchiato in the morning or stretch your legs with a drink after a stroll through the city.

Location: In the heart of Zurich, only a few minutes' walk from the main station, 15 minutes by train from Zurich International Airport.

Facilities: 58 tastefully furnished rooms – including 12 superior rooms, ecological cooling and heating system, bath/shower, TV/radio, free WiFi, safe, minibar, Nespresso coffee machine, mostly non-smoking rooms.

Gastronomy: The lobby bar for a coffee in the morning or an aperitif after work.

Seminar: A bright meeting room is available from 11:00 a.m. for groups of up to 26 people.

Recovery: A special guest room with whirlpool, the best starting point for a visit to the many sites of the City of Zurich and its surroundings.

Other Sorell Hotels nearby:

Sorell Hotel Seidenhof

0.6 km west / p. 18-19

Sorell Hotel Rex

1 km north/ p. 13



Sorell Hotel Rigiblick

Zurich

Just enjoy it! The Hotel Rigiblick, a boutique hotel located high above Zurich, stands out thanks to its unique view of the city. Despite its calm location in green surroundings, Zurich city centre is within easy reach in a matter of minutes via the Rigiblick funicular. Above the roofs of Zurich, host Vreni Giger surprises guests with her authentic, award-winning cuisine in a new atmosphere. Whether you're looking for a gourmet restaurant or a bistro – you can look forward to local, seasonal, organic cuisine at the highest level. In the gourmet restaurant in the evening, the finest cuisine is served. An inspiring atmosphere in combination with perfect culinary skill forms a unique work of art. In the district bistro, people enjoy hearty cooking in a relaxed atmosphere. Whether it's a mid-morning snack, lunch or coffee and cake: people feel right at home.

Location: Right on the edge of the forest with a view of Zurich, with good public transport links. The hotel has its own underground car park.

Facilities: Seven 1 1/2-room apartments of 45–92 m², with a lounge area and kitchenette, bathroom, TV/radio, CD/DVD player, free Wi-Fi, safe, Nespresso coffee machine, fridge and air conditioning in some rooms.

Gastronomy: With the Michelin star, Vreni Giger and Ronny Zipfel successfully continue the award-winning tradition of the hotel. That's the finest in local, organic cuisine.

Seminar/Banquet: Celebrations and parties can also be organised in the restaurant and bistro. Seminar suite suitable for seminars and business meetings.

Relaxation: Woodland walks in the immediate vicinity, the Rigiblick Theatre in the adjacent building. The sights of the city of Zurich are within easy reach using public transport.

THE PIONEER OF SWISS ORGANIC CUISINE, 450 WINES AND ONE MICHELIN STAR.



✉ Germaniastrasse 99
8044 Zurich

☎ T +41 43 255 15 70
F +41 43 255 15 80

🌐 rigiblick@sorellhotels.com
sorellhotels.com/en/rigiblick



Other Sorell Hotels nearby:

Sorell Hotel Zürichberg
1.5 km south-east / S.14-17

Sorell Hotel Rütli
1.5 km south-west / S.22-23

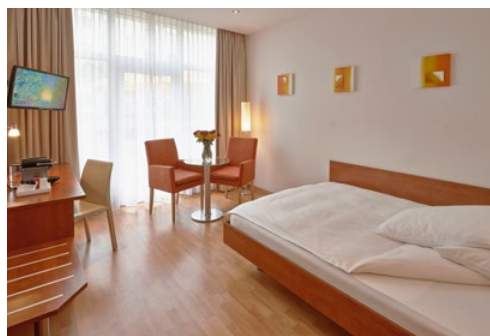
*Book your room through
sorellhotels.com and enjoy
the extra benefits*

Sorell Hotel Arte

Zurich-Spreitenbach

M+E

THE BOWLING ALLEY ISN'T THE ONLY EYECATCHER BY FAR.



The friendly atmosphere and genuine warmth are something like a house trademark. Added to that of course there's the uncomplicated service, the excellent location, the contemporary infrastructure and – last but not least – the 6-lane bowling alley. What could be more obvious than to catch up here with friends or to relax here with business partners after your meeting? The restaurant Ten also scores 10 points for its popular summer terrace: tasty lunch menus, light business lunches, local and international specialities, à la carte gourmet dishes, home-made burgers, tapas, snacks and club sandwiches. The Sorell Hotel Arte also has a very spacious wellness oasis. From sanarium to aromatic steam bath, there's everything for body, mind and soul. Your car can also take it easy in the hotel car park or in one of the many parking spaces.

Location: Well positioned for transport, close to the City of Zurich and the international airport, free car parking spaces.

Facilities: 72 modern and invitingly furnished rooms, bath or shower, TV/radio, free WiFi, safe, minibar, non-smoking rooms.

Gastronomy: Restaurant Ten with sunny terrace, traditional and classic dishes, home-made favourites and specialities.

Seminar/Banquet: 3 modern and flexible seminar and banquet rooms.

Recovery: Spacious wellness area with saunas, aroma steam bath, sanarium, Kneipp pool, cold-water immersion basin. Entry is free for hotel guests. The hotel's own bowling alley.

Wigartestrasse 10
8957 Spreitenbach
T +41 56 418 42 42
F +41 56 418 43 43
arte@sorellhotels.com
sorellhotels.com/en/arte

*Current room prices are
available at sorellhotels.com*



Other Sorell Hotels nearby:

Sorell Hotel Rex

13.3 km east / p.13

Sorell Hotel Seidenhof

14.1 km east / p.18-19



Sorell Hotel Sonntal
Zürich-Dübendorf



28



✎ Zürichstrasse 94/96
8600 Dübendorf

☎ T +41 44 802 12 82
F +41 44 821 41 91

🌐 sonntal@sorellhotels.com
sorellhotels.com/en/sonntal



Sometimes it's practical when you don't have to drive into the centre of the city. From the Sorell Hotel Sonnentäl in Dübendorf it takes 10 minutes to the international airport or the Exhibition Centre, or you can be quickly on your way on the A1 highway. Not only the transport connections are ideal: several expansive recreation areas are also in the vicinity. An ideal starting point for constructive and creative seminars. The flexibly organisable rooms are suitable for seminars and meetings as well as celebrations and cultural events. The Restaurant Sonnentäl has long been renowned: a winning ambience, modern cuisine, high quality – and all without fuss. Bright and cheery – that's how our three à la carte lounges present themselves. Pure relaxation awaits in the wellness centre and the fitness zone. The wellness oasis is excellently equipped inside and has a highly relaxing outside area.

Location: Well positioned with good highway and public transport connections, close to Zurich and the international airport, 100 free car parking spaces, garage.

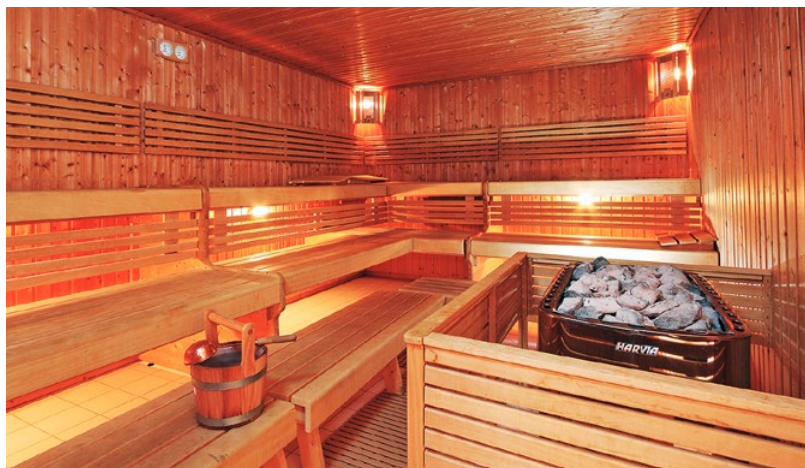
Facilities: 101 contemporary rooms, bath or shower, TV/radio, free WiFi, minibar, non-smoking rooms.

Gastronomy: Restaurants with sun terrace. Regional cuisine and steak specialities.

Seminar/Banquet: 3 flexible seminar and banquet rooms.

Recovery: 300 m² of wellness centre. Various saunas, steam bath, vitality showers, Kneipp pool, bio swimming pond in the garden, whirlpool and fitness pavilion. Entry is free for hotel guests.

IN 10 MINUTES AT THE AIRPORT AND IN SECONDS ON THE HIGHWAY.



Other Sorell Hotels nearby:

Sorell Hotel Zürichberg
3.2 km south-west / p. 14-17

Sorell Hotel Rigiblick
3.9 km west / p. 24-25

*Exclusive services for
bookings made through
sorellhotels.com*

***S

Sorell Hotel Krone

Winterthur

M+E



📍 Marktgasse 49
8400 Winterthur
📞 T +41 52 208 18 18
F +41 52 208 18 20
🌐 krone@sorellhotels.com
sorellhotels.com/en/krone



*The best prices and great offers at
sorellhotels.com*

Historic atmosphere with an urban touch, extraordinary service with irresistible charm – it's the crown of hospitality. Whether it's in the fine Wirtshaus zur Krone inn or in the cosy lounge and bar, the team will do their very best to make you feel at home in Winterthur. The boutique Hotel Krone is in the middle of the pedestrian zone in the historic old town. Train station, museums and theatres are short walks away. The bright, spaciouly designed rooms with stylish parquet floors guarantee comfort and a relaxed stay. Whether business or leisure, in the Krone you'll stay like royalty, breakfast included. At the Wirtshaus zur Krone inn, you can gorge on homemade, seasonal classics, rightly celebrated by its fans. And talking about celebrating: even that's possible in the Sorell Hotel Krone – with style and grandeur. What's more: the historic Kronesaal with its harmonious flair is the ideal location for special events.

Location: In the heart of Winterthur, in the middle of Europe's largest continuous pedestrian zone and only a few minutes' walk from the train station, easily reached from Zurich International Airport and the City of Zurich. Some parking spaces available.

Facilities: 39 bright and spacious rooms (renovated in May 2017), box-spring-bed, rain shower, individually adjustable temperature, coffee machine/kettle, TV/radio, free WiFi, safe, minibar, non-smoking hotel.

Gastronomy: The Wirtshaus zur Krone inn with market-fresh and creative cuisine, a large range of wines, bar and terrace.

Seminar/Banquet: The spacious Kronesaal on the «Bel-Etage» is the ideal place for meetings, banquets and aperitifs.

Recovery: The City of Winterthur is famous for its art and culture. Museums and theatres are close by.

EAT LIKE A KING, SLEEP LIKE A PRINCESS.



Other Sorell Hotels nearby:

Sorell Hotel Sonntal
15 km east/ p. 28-29

Sorell Hotel Rüden
23.2 km north/ p. 42-43



SO
Bern

Sorell Hotel Arabelle
Bern

33

PRACTICAL, CENTRAL, SMALL AND REFINED, WELCOME TO BERN.

Such an inviting atmosphere. The combination of impeccable service and central location is simply too strong an argument. The Sorell Hotel Arabelle is rightly a tip for business and leisure travellers. The house is in the centre of the Swiss capital, only a few minutes' walk from the main station and is also perfectly connected with public transport. The vaulted galleries, the parliament buildings, bear pit, cathedral, clock tower: the sites of the Bernese old town (UNESCO World Heritage listed since 1983) can be reached in minutes from the Sorell Hotel Arabelle on foot or by tram/bus. The breakfast buffet is a dream. Not only the size of the refined buffet is extremely generous, the service times (06:30 to 10:30) are also guaranteed to please; early birds and late risers alike will find something to their taste.

Location: 1km from Bern main station, 20 minutes' drive from Bern Airport. Good connections to Interlaken and the Bernese Highlands.

Facilities: 41 renovated rooms, bathrooms with floor heating, TV/radio, free WiFi, safe, kettle, minibar (at reception), non-smoking rooms.

Gastronomy: Sorell breakfast, drink vending machine on each floor, several restaurants and bars in the vicinity.

Recovery: Many sites including the Federal Parliament, the bear pit and the clock tower are in the vicinity.



📍 Mittelstrasse 6
3012 Bern

📞 T +41 31 301 03 05
F +41 31 302 42 62

🌐 arabelle@sorellhotels.com
sorellhotels.com/en/arabelle

📍 Other Sorell Hotels nearby:

Sorell Hotel Ador
0.8 km south / p. 34-35

Sorell Hotel Aarauerhof
66 km north-east / p. 38-39

*Current room prices are
available at sorellhotels.com*

Sorell Hotel Ador

Bern

M+E



17 ROOMS FOR UP TO 300 PEOPLE. ANY QUESTIONS?

The Sorell Hotel Ador is one of the most popular business hotels in the City of Bern. A perfectly equipped congress centre, spacious banquet and seminar rooms and a coffee-bar-lounge for relaxing. The hotel is in the centre of Bern, only a few steps from the main station and the Bernese old town. Whether for an intimate talk or a big show: there are no fewer than 17 air-conditioned seminar rooms available in the Sorell Hotel Ador, offering the most up-to-date equipment such as HD ceiling beamers and permanently installed simultaneous translation systems. Exactly the right setting for a memorable meeting, a successful seminar or a powerful presentation. And with regard to sustainability: all services can be offered CO₂-neutral on request. The Sorell Hotel Ador is known for its tailored packages for up to 300 people – from simple aperitifs to an attractive stand-up lunch to a gala dinner. Nearly everything is possible in the Sorell Hotel Ador. Last but not least, we offer not only the most suitable rooms, but also a committed team with the creativity, flexibility and professional know-how gained from thousands of events.

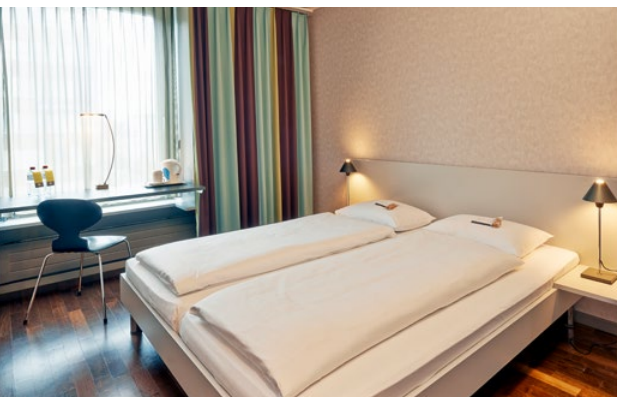
Location: Next to Bern train station. 2 minutes from the city centre, 20 minutes by car from Bern-Belpmoos Airport, public car park in the hotel. Good connections to Interlaken and the Bernese Highlands.

Facilities: 59 partly air-conditioned rooms with bath or shower, TV/radio, free WiFi, safe and kettle. The business rooms come additionally with a Nespresso coffee machine. Non-smoking rooms.

Gastronomy: Hotel bar with a wide selection of drinks and snacks as well as a minibar on the floor.

Seminar/Banquet: 17 flexibly combinable seminar rooms.

Recovery: Many sites including the Federal Parliament, the bear pit and the clock tower are close by.



Other Sorell Hotels nearby:

Sorell Hotel Arabelle

0.8 km north / p. 33

Sorell Hotel Aarauerhof

66 km north-east / p. 38–39

Book your room through [sorellhotels.com](https://www.sorellhotels.com) and enjoy the extra services



Laupenstrasse 15
3001 Bern

T +41 31 388 01 11
F +41 31 388 01 10

ador@sorellhotels.com
sorellhotels.com/en/ador

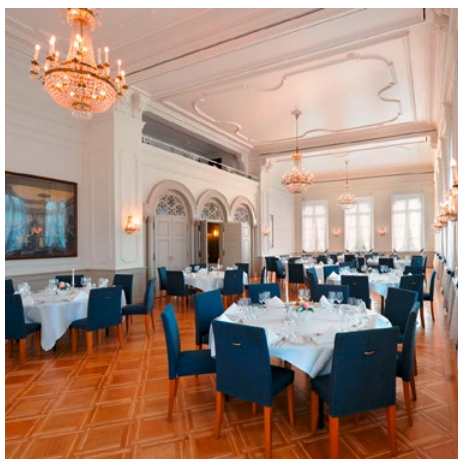


Sorell Hotel Merian

Basel

M+E

BETWEEN MUSEUMS, THE MARKET SQUARE AND EXHIBITION CENTRE.



The Sorell Hotel Merian is not only a modern business hotel,

it is also the only 4-star hotel right on the banks of the Rhine. Here, you will experience informal Basel hospitality and enjoy great food of the highest order.

The banqueting halls and seminar rooms in every conceivable size are able to cater for all needs. The highlight is the splendid Merian Hall, a pearl of late-Biedermeier architecture, which is also known as «Kleinbasel's Ehrentribüne am Rhein» – the Kleinbasel region's VIP stand on the Rhine. And rightly so. The elegant windows give a wonderful, unobstructed panoramic view to the opposite banks of the Rhine and the old town. This is thanks to the hotel's central location. You park your car in the underground car park and travel everywhere else in comfort on the tram – known locally as the «Drämmli».

Location: The hotel is situated right in the heart of Basel in a relatively traffic-free zone by the Middle Bridge. In three stops, you've arrived at the Messe exhibition centre; after two stops in the other direction, you've reached the market square in the centre of the old town.

Facilities: 65 spacious rooms and apartments, many with a view of the Rhine and all fitted with a flatscreen TV, safe, desk, coffee machine and free minibar. Hairdryers, slippers and bathrobes are also available. Free Wi-Fi throughout the building, of course.

Gastronomy: The Brasserie Café Spitz with a view of the Rhine impresses with its fine seasonal dishes and exclusive fish cuisine.

Seminar/Banquet: Charming rooms in various sizes for meetings or banquets for up to 140 guests.

Relaxation: Basel is well known for its museums of international repute. Alsace, the border triangle, the Swiss Jura and the Markgräflerland region are popular destinations for excursions.

✎ Rheingasse 2
4058 Basel

☎ T +41 61 685 11 11
F +41 61 685 11 12

✉ merian@sorellhotels.com
sorellhotels.com/merian



Other Sorell Hotels nearby:

Sorell Hotel Aarauhof
54.8 km south-east / S. 38-39

Sorell Hotel Arte
72.1 km east / S. 26-27

Current room rates can be found at: [sorellhotels.com](https://www.sorellhotels.com)

Sorell Hotel Aarauerhof

Aarau

M+E

38

LET'S MEET IN THE MIDDLE – IN AARAU.



*Current room prices are
available at sorellhotels.com*

Did you know: The City of Aarau can be reached in less than an hour by 60 % of all Swiss. Of course, this isn't the hotel's only advantage. Apart from all conveniences, it offers 8 seminar rooms with infrastructure for up to 120 people and a restaurant with a large garden terrace. The hotel has long been a popular business, conference and seminar hotel and a sought-after address for celebrations, birthday parties or company meals. The extra large, bright rooms encourage a good mood, even when you need to check your e-mail after the meeting and finish off some work. Lunch and dinner also raise the spirits, with traditional favourites, Mediterranean creations and Swiss specialities. In good weather in summer, you can also eat on the sunny terrace. For physical relaxation, we recommend the wellness oasis. For those who want to relax even further: the hotel offers soothing treatments from sport massages to hot stones and aromatic oils.

Location: In the heart of Switzerland, centrally located next to the Aarau train station; the hotel is entered from the car park via a lift.

Facilities: 81 modern and elegantly furnished rooms, shower or bath, TV/radio, free WiFi, minibar, non-smoking rooms.

Gastronomy: Restaurant with regional and seasonal dishes, sunny terrace.

Seminar/Banquet: 8 spacious and flexible seminar and banquet rooms.

Recovery: Wellness oasis with various saunas, steam bath, whirlpool, Kneipp area and quiet zones. Free entry for hotel guests. Wide selection of massages available. Close to the Aarau old town, the Kunsthau gallery and Naturama. The hotel is on several national bike routes.

✎ Bahnhofplatz 2
5000 Aarau

☎ T +41 62 837 83 00
F +41 62 837 84 00

🌐 aarauerhof@sorellhotels.com
sorellhotels.com/en/aarauerhof

✎ Other Sorell Hotels nearby:

Sorell Hotel Ador
66 km south-west / p.34-35

Sorell Hotel Arte
24.5 km east/ p.26-27



39





✎ Other Sorell Hotels nearby:

Sorell Hotel Seefeld

25 km north-west / S. 20-21

Sorell Hotel Seidenhof

26 km north-west / S. 18-19

The Sorell Hotel Speer has it all.

Situated in the middle of the charming old town of Rapperswil, with a historic exterior and a modern interior, this four-star hotel impresses its guests with its top service and excellent dining options. No matter whether you are travelling on business, as a family or a couple, you are sure to feel at home in this hotel. As the ancient walls emanate a powerful sense of constancy and calm, the modern interior leaves no expectation unfulfilled. Guests who are on the road, away from home, really appreciate the personal atmosphere and the location's easy access to the rest of the region. Zurich City and Zurich Airport are just 35 minutes away. But visitors are left in no doubt when strolling through the old town that the real advantages of this hotel are right on its doorstep: The castle, lake and shopping outlets are just a stone's throw away.

Location: In the centre of Rapperswil, directly opposite the railway station, near the lake promenade.

Facilities: The 56 rooms ensure everyone's individual needs are met. Bath and shower WC, Smart Up TV/ radio, free WiFi, kettle, minibar and parquet floors.

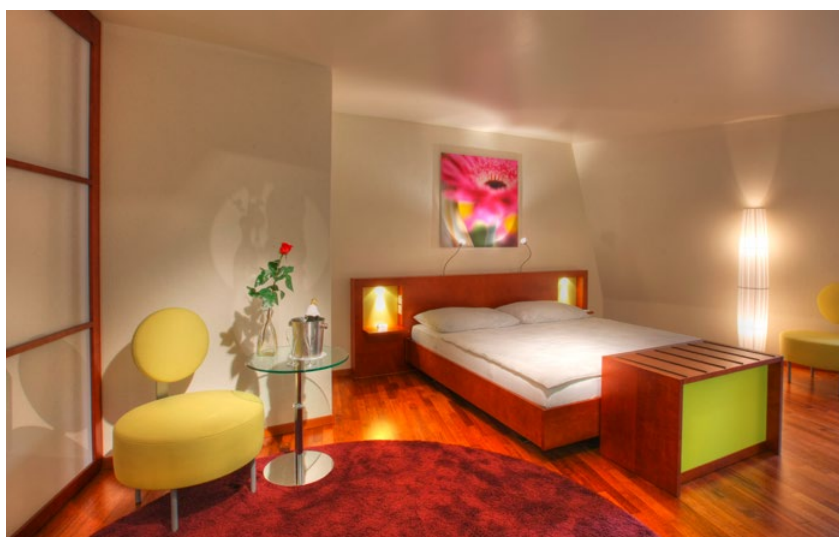
Gastronomy: The Sayori restaurant serving Japanese, Chinese and Thai cuisine with integrated sushi bar is on the hotel premises, as is the Mojo Bar & Lounge – the bar for the hip crowd in Rapperswil.

Recovery: Just a short walk from the hotel are the medieval castle, the famous rose gardens, the lakeside promenade, Free entry for our hotel guests to the AuraVita day spa and health club.

Sorell Hotel Speer

Rapperswil

HISTORIC, MODERN AND RELAXED - A REAL FIND IN CENTRAL RAPPERSWIL



✎ Untere Bahnhofstrasse 5
8640 Rapperswil

☎ T +41 55 220 89 00
F +41 55 220 89 89

🌐 speer@sorellhotels.com
sorellhotels.com/en/speer

*Make your booking through sorellhotels.com
and benefit from exclusive services*

IT ALMOST SEEMS LIKE THE FEEL-GOOD ATMOSPHERE WAS BUILT INTO THE SPLENDID GUILD HOUSE.



 Oberstadt 20
8200 Schaffhausen
 T +41 52 632 36 36
F +41 52 632 36 37
 rueden@sorellhotels.com
sorellhotels.com/en/rueden

*** Sorell Hotel Rüden Schaffhausen

M+E

Simply a jewel. The historic brickwork from the 18th century and the ancient parquet floors, combined with surprising elements of contemporary internal design, turn the house into a unique and charming home. The intimately managed 30-room hotel is next to the pedestrian zone of the picturesque Schaffhausen old town. Numerous shops, cinemas, restaurants and bars are all in the vicinity. The bank of the Rhine is also a short stroll away. The rooms are quiet, cosy, some with a wonderful view over the roofs of the old town. Business and banquet menus are served on request in the Sorell Hotel Rüden restaurant at midday. The Guild Hall – unarguably the showpiece of the hotel – hosts classical music concerts as well as meetings and banquets.

Location: 2 minutes from the Schaffhausen train station, on the edge of the pedestrian zone, 3 km from the Rhine Falls.

Facilities: 30 modern furnished rooms in a historic building, shower, TV/radio, free WiFi, safe, non-smoking rooms.

Gastronomy: The hotel features a generous breakfast area as well as a cosy lounge with a fireplace.

Seminar/Banquet: 7 seminar and banquet rooms, incl. Guild Hall from the 18th century, superbly suited for events and celebrations. Seminars for up to 80, standing aperitifs for up to 200 people.

Recovery: The Rhine Falls are easily reached with public transport. Numerous sights, shops, museums, cinemas and the Rhine river are easily reached on foot. Free entry for hotel guests to the wellness and fitness centre «EuroFit». The hotel is on national bike routes.

Current room prices are available at [sorellhotels.com](https://www.sorellhotels.com)



Other Sorell Hotels nearby:

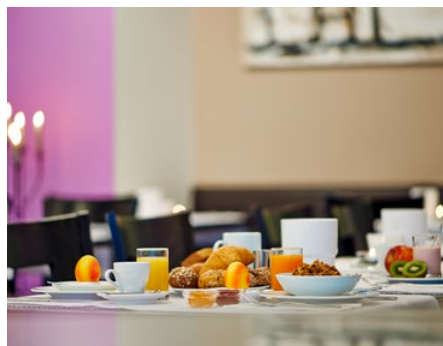
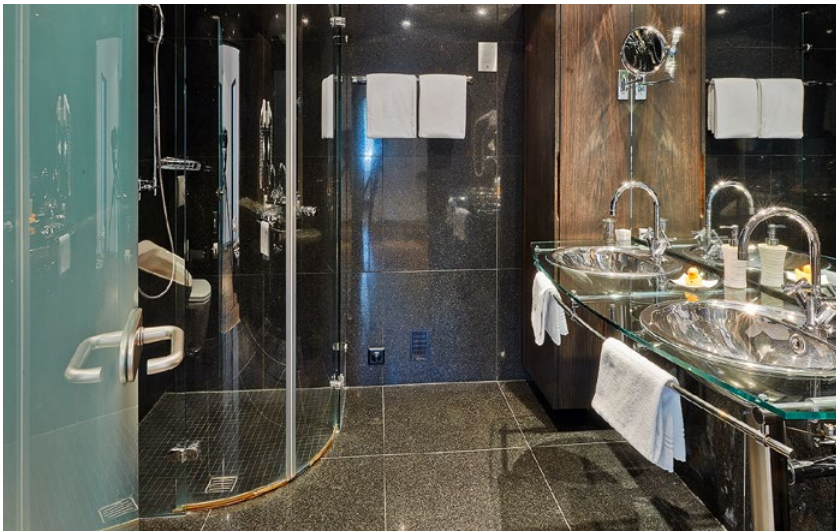
Sorell Hotel Krone
23.2 km south / p. 30-31

Sorell Hotel Sonnentel
33.7 km south / p. 28-29

Sorell Hotel City Weissenstein
 St. Gallen

44

STAY CENTRALLY IN THE QUIET HEART OF ST. GALLEN.



Other Sorell Hotels nearby:

Sorell Hotel Tamina
 48 km south / p. 46-49

Sorell Hotel Krone
 49 km west / p. 30-31

A room in St. Gallen's trendy quarter.

The Sorell Hotel City Weissenstein makes it possible. The hosts make sure you don't just feel trendy, but cosy too. And all in the perfect location. The hotel is also ideal for visitors to St. Gallen's Exhibition Centre or the university, and only a few steps from the train station. Restaurants, museums, cinemas and theatres are also easily reached on foot. From small refined standard rooms to business and deluxe rooms to the large apartment - the choice is yours in the Sorell Hotel City Weissenstein. The hotel's breakfast buffet is an experience: delicious regional products, fresh fruit juices, perfectly presented and served in a delightful ambience. The best conditions then for a tailored stay in the Gallus city, the charming metropolis between Lake Constance and the Appenzell region.

Location: In the heart of the City of St. Gallen, close to the train station and still peaceful.

Facilities: 34 modern and stylishly furnished rooms and single- to three-room apartments, shower or bath, TV/radio, safe, free WiFi, kettle, minibar, apartments between 50-100 m² with kitchenette and fridge, dining room, living room area with CD/DVD player, some with balcony, all non-smoking rooms.

Gastronomy: Small bar for a coffee or a relaxing glass of wine, garden terrace in summer.

Recovery: The numerous sights of the City of St. Gallen such as the monastery library (UNESCO World Heritage listed), the cathedral or the textile museum are in walking distance.

Exclusive services for bookings made through [sorellhotels.com](https://www.sorellhotels.com)



Davidstrasse 22
9000 St. Gallen

T +41 71 228 06 28
F +41 71 228 06 30

cityweissenstein@sorellhotels.com
sorellhotels.com/en/cityweissenstein

Sorell Hotel Tamina

Bad Ragaz

M+E

THE HEIDILAND IN FRONT OF YOUR EYES, SURROUNDED BY MOUNTAINS.



Whether for a short break, a couple of wellness days, a business meeting or a family celebration: you don't need to wait long for recovery and inspiration in the special atmosphere of Bad Ragaz. In the Sorell Hotel Tamina you'll enjoy wonderful feelings in wonderful rooms. Lean back, breathe deeply and meet your friends for a relaxed chat. You'll find the atmosphere you're looking for in the Tamina Lounge, accompanied of course by delicious snacks, drinks and wines. Later, if you want to shift up a culinary gear, treat yourself to a dinner in the «Restaurant Im Park». Regional products, a pinch of internationalism, a healthy dash of creativity and voilà! The surprisingly different local specialities are ready. Accompanied of course by elegant wine from the Bündner Herrschaft region.

Special moments deserve special care: a wedding reception, a celebration or a birthday party, but also an aperitif with business partners, a business meeting or a client event – your event will become an unforgettable experience in the Sorell Hotel Tamina. Gastronomy, landscape, hospitality. All tailored just for you.

Bad Ragaz is well-being. The power of the 36.5°C water simply washes the everyday and your worries away. Enjoy these precious moments. The Tamina Therme hot baths offers various indoor and outdoor pools, numerous water jets and whirlpools surrounded by unique architecture.

The historic village baths from 1866 are today a very special Spa House: Traditional treatments with mineral water, combined with new naturopathic therapies and modern wellness elements ensure a unique spa experience. The Spa House is connected to the Sorell Hotel Tamina and easily reached in your bath robe. Hotel guests profit not only from a whole world of benefits, but also from attractive special conditions.

 Am Platz 3
 7310 Bad Ragaz
 T +41 81 303 71 71
 F +41 81 303 71 72
 tamina@sorellhotels.com
 sorellhotels.com/en/tamina



Other Sorell Hotels nearby:

Sorell Hotel Asora
32 km south-east/ p.50

Sorell Hotel City Weissenstein
48 km north/ p.44-45



Location: In the middle of the picturesque holiday town Bad Ragaz, and directly next to the Tamina Therme hot baths and the golf course. 10 minutes from the train station. Underground car park.

Facilities: 50 spacious double rooms and junior suites with bath and shower, free WiFi, safe, minibar and Nespresso coffee machine. Non-smoking rooms.

Gastronomy: «Restaurant Im Park» culinary variety from Heidiland, large selection of Graubünden wines, garden terrace and beautiful glass pavilion, lounge.

Seminar/Banquet: 6 multi-functional seminar and banquet rooms.

Recovery: The nearby Tamina Therme is a Preferred Partner of the Sorell Hotel Tamina. We are also affiliated with the Spa House. The optimal base for hiking, golf, cycling and skiing. Excursions in the region: Tamina Gorge, Heididorf, Pizol, Sargans Castle with museum of local history, etc. Shopping: Designer Outlet in Landquart.





Current room prices are available at sorellhotels.com

Sorell Hotel Asora

Arosa

50

In the heart of Arosa, surrounded by one of the most beautiful mountain landscapes in Switzerland, the holiday guests at the Sorell Hotel Asora outshine the sun... That's how a holiday feels! With a cocktail in the Orelli Bar, at a refined dinner in the restaurant or in the small fitness-relaxation oasis, you can let go and enjoy your time in the mountains to your heart's content. There is a 4-course à la carte menu in the Restaurant Orelli in the evenings. It's the perfect end to a day in the fresh mountain air. Especially when you can enjoy it in front of such a magnificent view. Of course on sunny days, summer and winter, a plate of local specialties and a glass of wine on the sun terrace is not a bad choice either. Viva! From wine to coffee: they say you get the best espresso in Arosa in the Orelli Bar. Thomas Mann supposedly preferred to drink tea here. That was in the 30s, when the Orelli was still the «Old India». Whether for coffee, tea or a single malt, relaxed hours in the Sorell Hotel Asora are assured.

Location: 300m from the train station, 300m from the cable car station Weisshorn, 2km from the cable car station Hörnli. Walking distance to public car parks (parking fee). Zurich is 2.5 hours away by public transport.

Facilities: 33 comfortable rooms, bath or shower, TV/radio, free WiFi, safe; some rooms with mountain view; non-smoking rooms. Ski and shoe-drying room.

Gastronomy: Restaurant Orelli with breath-taking view of the surrounding mountain landscape. Mild, tasty traditional dishes, sophisticated wine selection. The sunny terrace is open in good weather. Orelli Bar.

YOUR HOLIDAY WITHOUT LIMITS STARTS ABOVE THE TREELINE.



Poststrasse
7050 Arosa

T +41 81 377 12 08
F +41 81 377 46 90

asora@sorellhotels.com
sorellhotels.com/en/asora



Recovery: Fitness-relaxation oasis with sauna, steam bath, vitality shower, lounge chairs and fitness equipment. Hiking, bike tours, golf and winter sports.

Other Sorell Hotels nearby:

Sorell Hotel Tamina
32 km north-west / p. 46-49

Sorell Hotel Seidenhof
149 km north-west / p. 18-19

*Book your room through
sorellhotels.com and enjoy
the extra services*

A close-up, high-angle photograph of a woman with dark hair sleeping peacefully in a bed. She is lying on her side, resting her head on her crossed arms. She is wearing a blue textured sweater over a white shirt. The bed has white linens and a blue blanket. The background is a dark headboard and a light-colored wall.

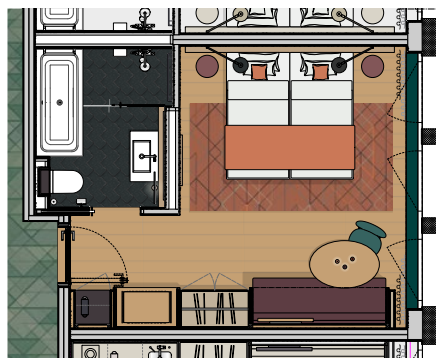
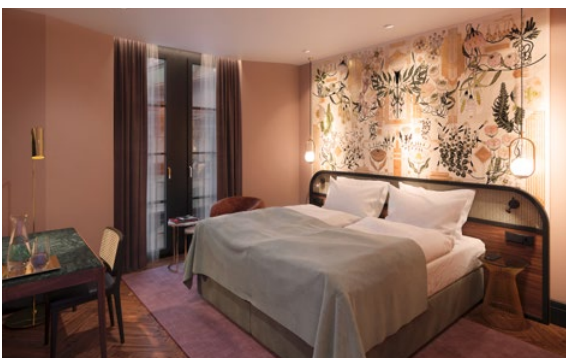
**CLEARLY MORE RELAXED
- A STAY IN THE SORELL HOTELS.**

**OPENING IN 2020,
THE TOP HOTEL IN A
CENTRAL LOCATION IN
THE HEART OF ZURICH.**

Sorell Hotel St. Peter

Zurich

53



 In Gassen 10
8001 Zurich

Location: The hotel is situated in the middle of the pedestrian zone in the historic old town. The most important spots, such as Paradeplatz, Lake Zurich, the main station, museums and theatres, are all within walking distance.

SORELL MEETINGS & EVENTS: EXPERT AND KNOWLEDGABLE FROM BUSINESS TO BISTRO.

No event is like another - that's why every celebration in a Sorell Hotel receives an individual, personal touch, and each business event gets professional, tailored attention. Whether a meeting, congress or seminar, a milestone birthday, banquet or wedding reception, the Sorell Hotel's MICE professionals have not only the infrastructure and service under control, but also ideas for the implementation and overall programme ready. From the simple to the complex, from the pragmatic to the visionary.



Order our Meetings & Events brochure: sorellhotels.com

Professionalism

There is no option to perfection.



We have to admit. When it comes to events, the managers at the Sorell Hotels can be quite demanding. With regards to errors and mistakes there's only one strategy: zero tolerance. Be it your meeting, seminar or party: the Sorell Hotels do everything it takes to make it perfect. And we really do mean everything. From the quote to the welcome speech to the bouquet at the end. Your guests' applause is guaranteed.

Sorell Hotel Zürichberg



Orellistrasse 21, 8044 Zurich
T +41 44 268 35 35, F +41 44 268 35 45
zuerichberg@sorellhotels.com

Sorell Hotel Sonnentel



Zürichstrasse 94 / 96, 8600 Dübendorf
T +41 44 802 12 82, F +41 44 821 41 91
sonnentel@sorellhotels.com

Sorell Hotel Arte



Wigartestrasse 10, 8957 Spreitenbach
T +41 56 418 42 42, F +41 56 418 43 43
arte@sorellhotels.com

Food competence

Food isn't just a side dish.



For parties and events, the catering is a central component of the atmosphere and mood. Consider how relaxed a meeting can begin when the latte macchiato is already on the table and a basket of fresh croissants fills the room with a delicious smell. How exciting for your guests when instead of the usual sausage rolls, the aperitif serves up some very different snacks and culinary surprises.

Sorell Hotel Krone



Marktgasse 49, 8400 Winterthur
T +41 52 208 18 18, F +41 52 208 18 20
krone@sorellhotels.com

Sorell Hotel Ador



Laupenstrasse 15, 3001 Bern
T +41 31 388 01 11, F +41 31 388 01 10
ador@sorellhotels.com

Sorell Hotel Aarauerhof



Bahnhofplatz 2, 5000 Aarau
T +41 62 837 83 00, F +41 62 837 84 00
aarauerhof@sorellhotels.com

Personality

Individuality is our norm.



It's that certain something: the personal touch. The Sorell Hotels' event professionals know what an event needs to lift it out of the mainstream and turn it into a complete success. How? Even the Sorell Hotels can't work magic, but they have the know-how earned from many years and countless events. And now and then, it's rumoured, they really can pull a rabbit out of the hat.

Sorell Hotel Rügen



Oberstadt 20, 8200 Schaffhausen
T +41 52 632 36 36, F +41 52 632 36 37
rueden@sorellhotels.com

Sorell Hotel Tamina



Am Platz 3, 7310 Bad Ragaz
T +41 81 303 71 71, F +41 81 303 71 72
tamina@sorellhotels.com

Sorell Hotel Merian



Rheingasse 2, 4058 Basel
T +41 61 685 11 11, F +41 61 685 11 12
merian@sorellhotels.com

